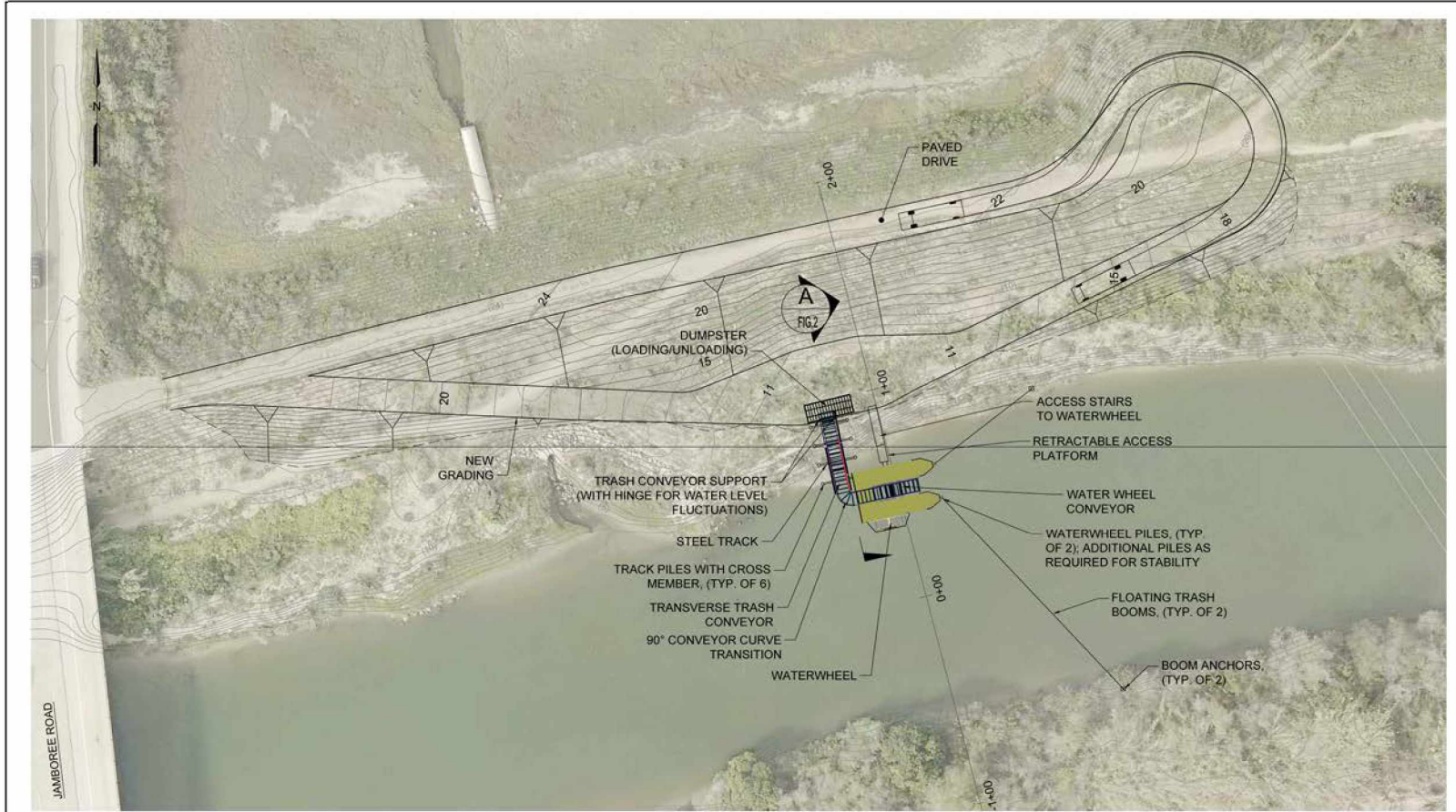


Item 8b - Exhibit 2
Project Site Plan and Graphics

Water Wheel - Plan View



1 PLAN: WATERWHEEL SITE LOCATION
 FIG. 1 SCALE: 1"=20'-0"



| DATE | REVISIONS | INITIALS |
|------|-----------|----------|
| | | |
| | | |
| | | |

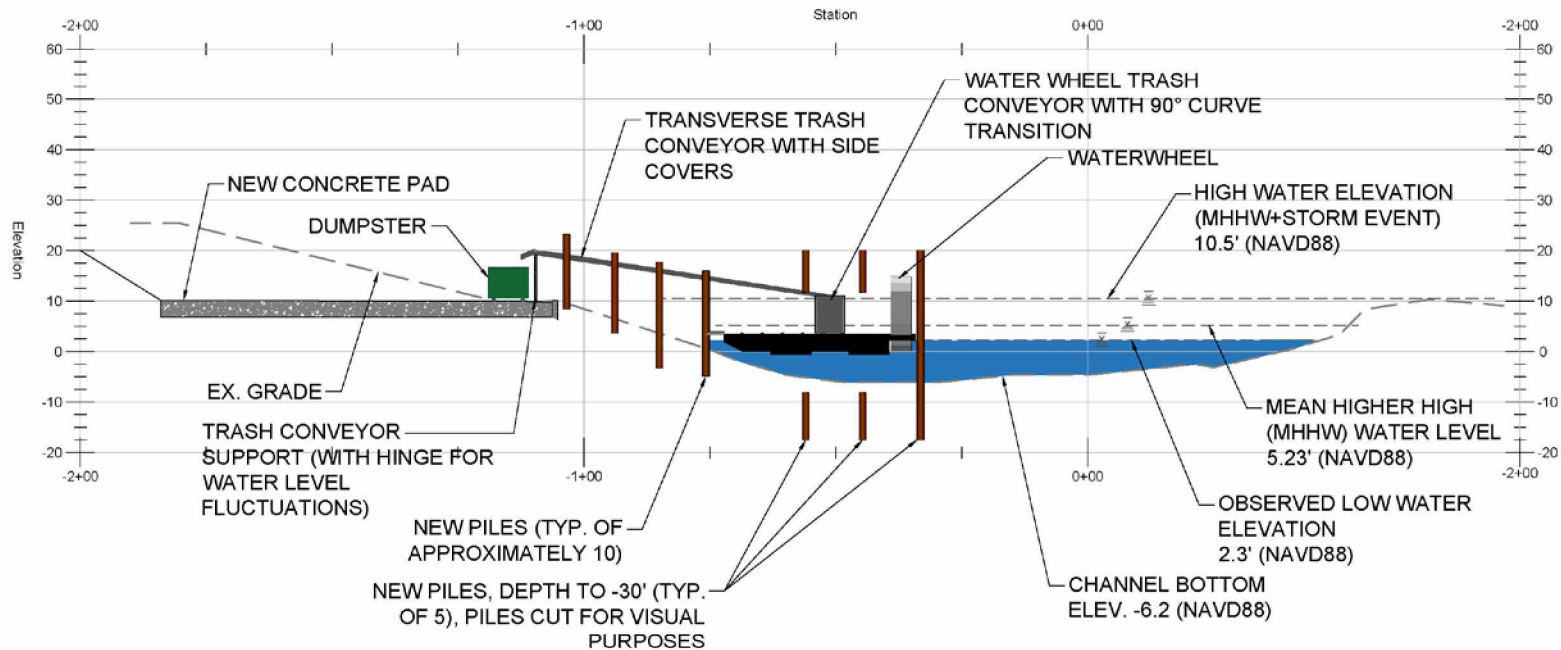


PROFESSIONAL CERTIFICATION: I hereby certify that these documents were prepared or approved by me, and that I am a duly licensed professional engineer under the laws of the State of Maryland. License No. 20002, Expiration Date: 2020/03/31

1/18/2018
 KCI
 ALL RIGHTS RESERVED
 PROJECT NO.
 WATERWHEEL SITE LOCATION - PLAN

CITY OF NEWPORT BEACH
 ORANGE COUNTY, CALIFORNIA
 WATERWHEEL SITE LOCATION - PLAN

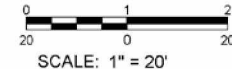
Water Wheel - Section View



NOTES:

1. ALL DIMENSIONS ARE APPROXIMATE.
2. ADDITIONAL DUMPSTER WHEELS ARE TO BE PROVIDED AS REQUIRED TO MEET TRACK SLOPE.
3. CURRENT ILLUSTRATION SHOWS WATERWHEEL AT LOW WATER LEVEL.

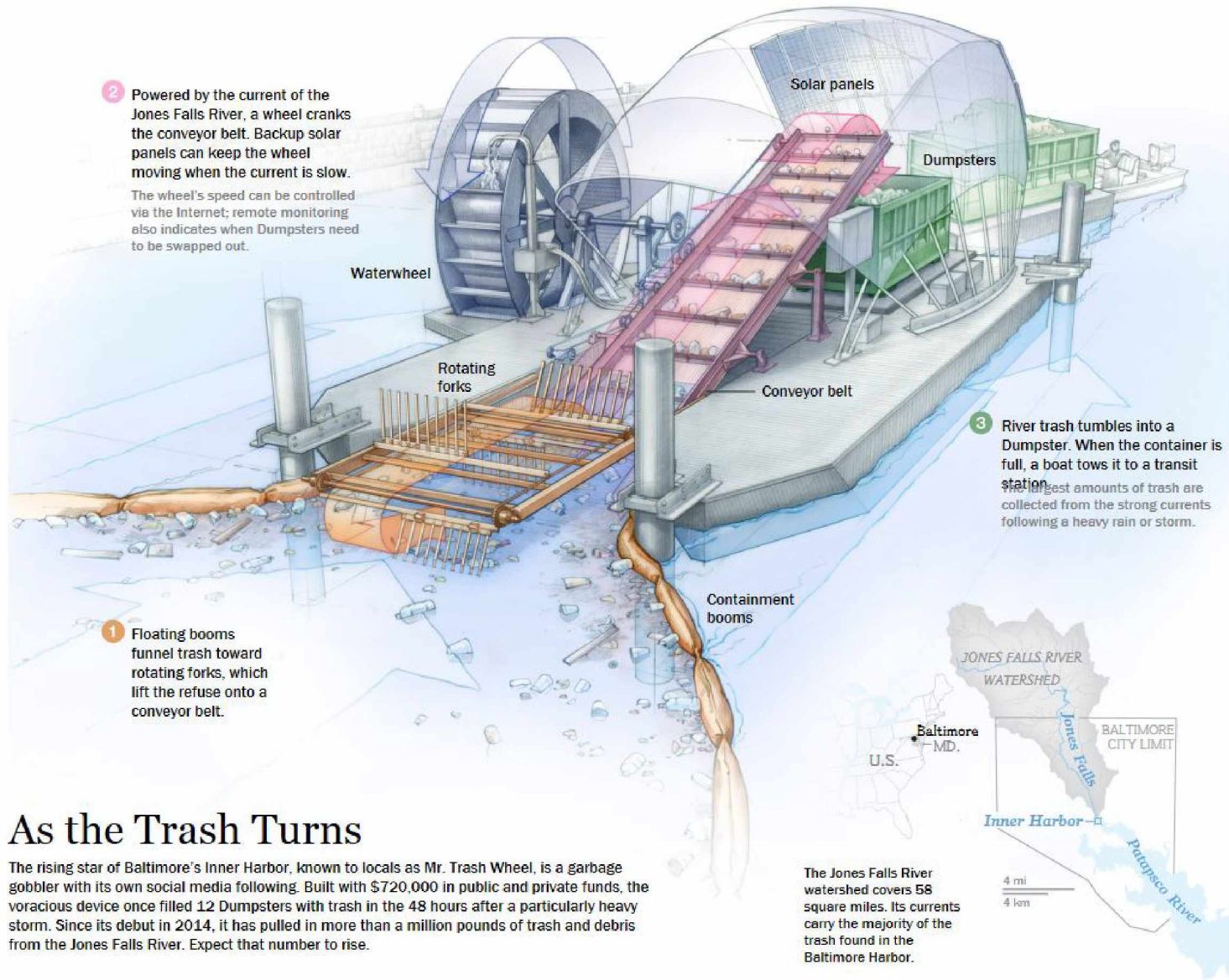
A SECTION: 13+50 WATERWHEEL BARGE
 FIG. 2 SCALE: HORIZONTAL: 1"=20'-0"
 VERTICAL: 1"=20'-0"



Feb 21, 2018 - 8:59pm User: Samantha Razon
 F:\Projects\1605_Canibata VCI Exhibits\VEL_2007-200596-06-CREEK-Model - Profiles.dwg

| | | | | | |
|-------------|--|--|--|-----------------|---|
| | | | ENGINEERS PLANNERS SCIENTISTS CONSTRUCTION MANAGERS 956 Park Brook Road Gaithersburg, MD 20878 Phone: (410) 816-7800 Fax: (410) 816-7817 www.kci.com | DATE: FEB./2018 | CITY OF NEWPORT BEACH ORANGE COUNTY, CALIFORNIA SAN DIEGO CREEK WATERWHEEL SECTION BARGE |
| | | | | SCALE: AS SHOWN | |
| DRAWN BY: | | | | | |
| CHECKED BY: | | | | | |

Water Wheel Schematic - Baltimore's Mr. Trash Wheel



2 Powered by the current of the Jones Falls River, a wheel cranks the conveyor belt. Backup solar panels can keep the wheel moving when the current is slow. The wheel's speed can be controlled via the Internet; remote monitoring also indicates when Dumpsters need to be swapped out.

1 Floating booms funnel trash toward rotating forks, which lift the refuse onto a conveyor belt.

3 River trash tumbles into a Dumpster. When the container is full, a boat tows it to a transit station. The largest amounts of trash are collected from the strong currents following a heavy rain or storm.

As the Trash Turns

The rising star of Baltimore's Inner Harbor, known to locals as Mr. Trash Wheel, is a garbage gobbler with its own social media following. Built with \$720,000 in public and private funds, the voracious device once filled 12 Dumpsters with trash in the 48 hours after a particularly heavy storm. Since its debut in 2014, it has pulled in more than a million pounds of trash and debris from the Jones Falls River. Expect that number to rise.

The Jones Falls River watershed covers 58 square miles. Its currents carry the majority of the trash found in the Baltimore Harbor.

