




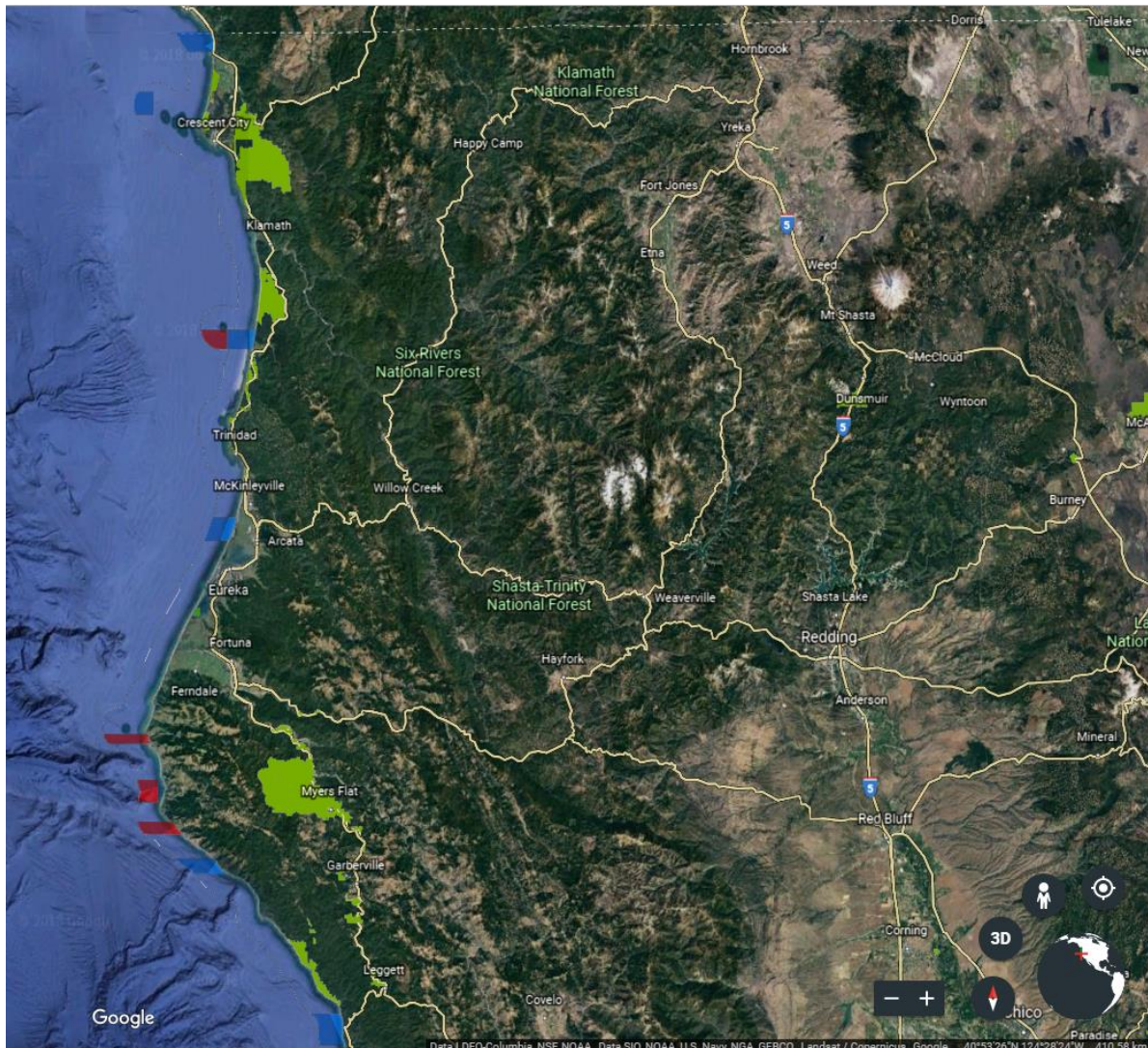


**EXHIBIT A**  
Map of Parks Project Sites

**LEGEND**

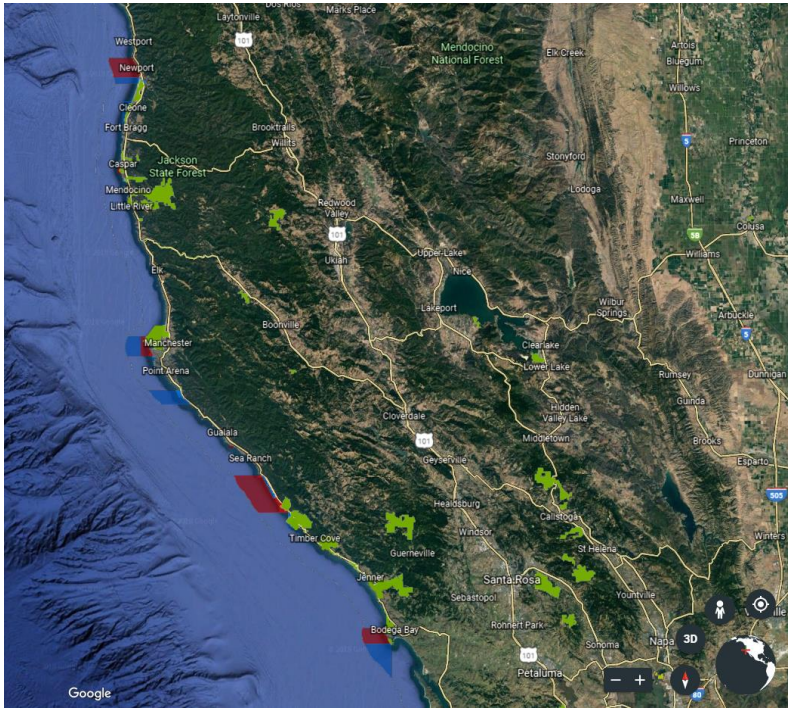
-  State Park Unit
-  State Marine Reserve
-  State Marine Conservation Area
-  State Marine Park
-  State Marine Recreational Management Area

*North Coast Redwoods District*

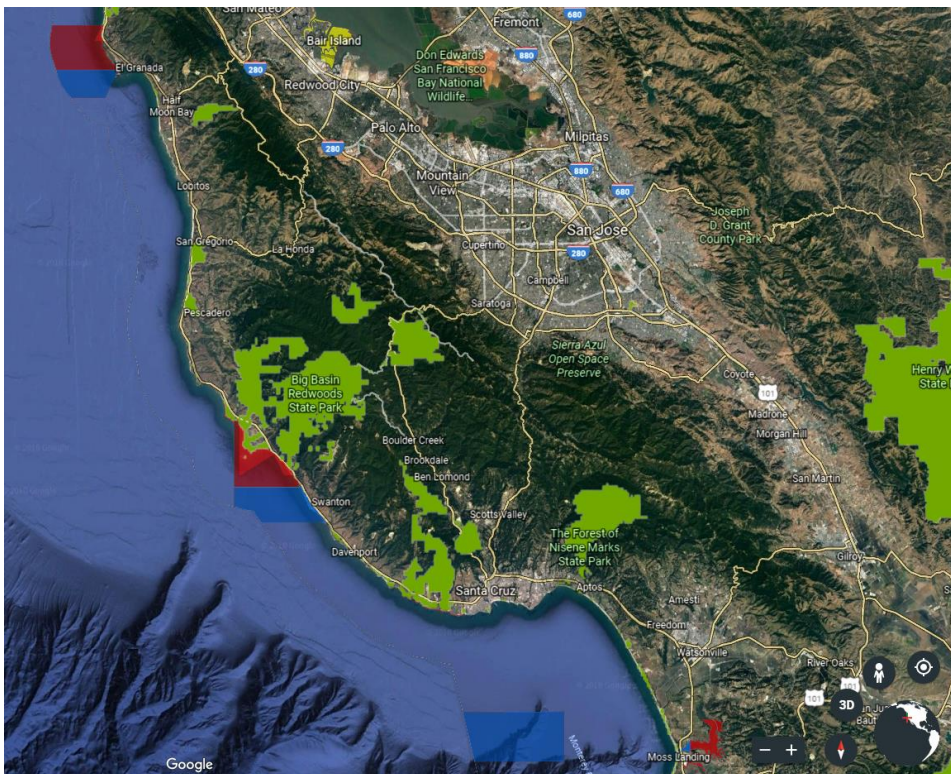




Sonoma-Mendocino District

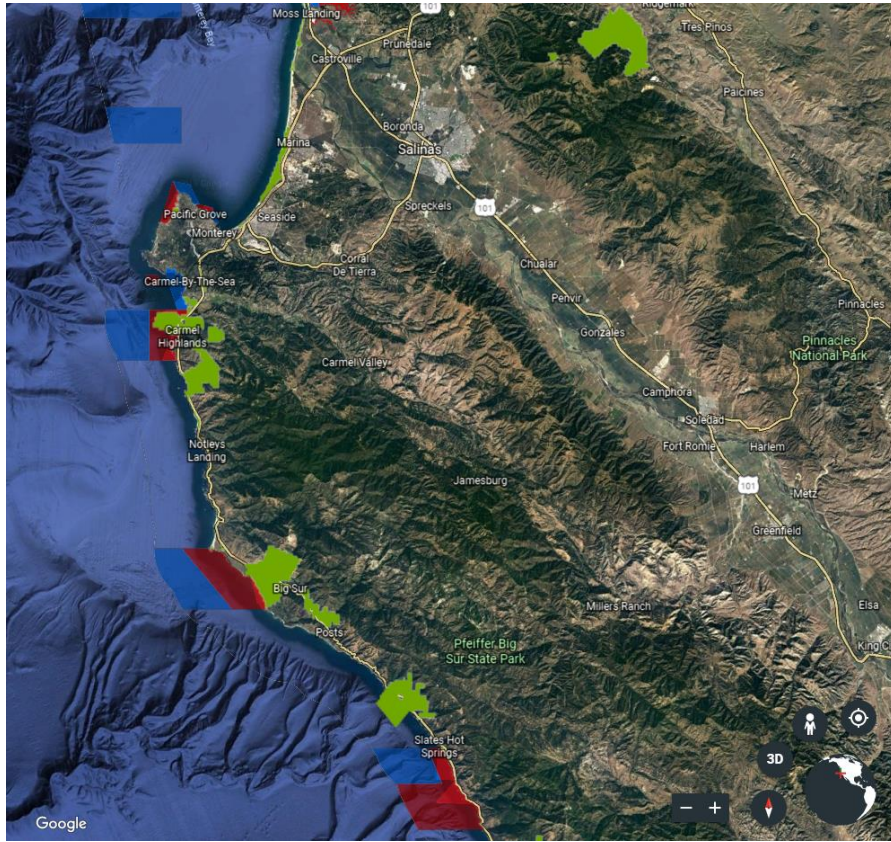


Santa Cruz District





Monterey District

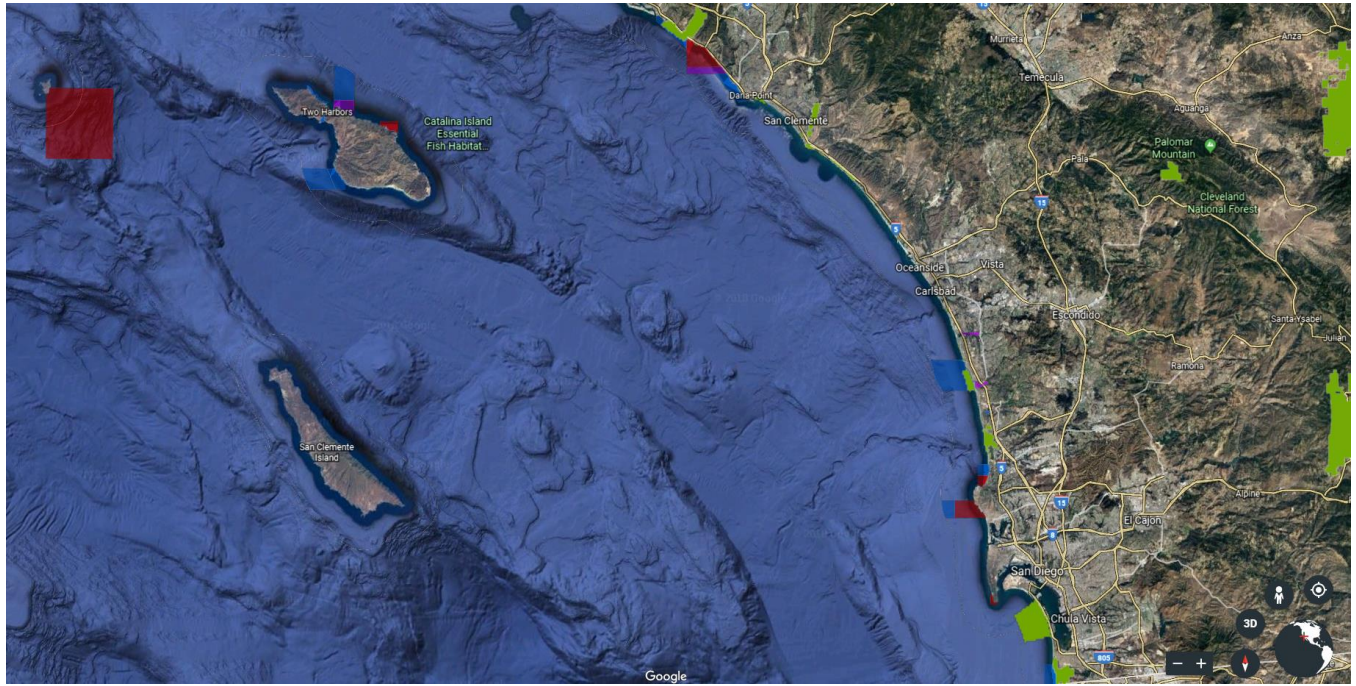


San Luis Obispo District





Orange and San Diego Coast Districts



*Once-Through Cooling Interim Mitigation Program*

---

<b>California State Parks Co-located with Marine Protected Areas</b>	
<b>State Park Unit</b>	<b>Marine Protected Area</b>
<b>North Coast Redwoods District</b>	
Pelican SB	Pyramid Point SMCA
<b>Sonoma-Mendocino District</b>	
MacKerricher SP	Ten Mile Estuary SMCA Ten Mile SMR Ten Mile Beach SMCA MacKerricher SMCA
Point Cabrillo Light Station SHP Russian Gulch SP Mendocino Headlands SP Van Damme SP Navarro River Redwoods SP	Point Cabrillo SMR Russian Gulch SMCA Big River Estuary SMCA Van Damme SMCA Navarro River Estuary SMCA
Manchester SP	Point Arena SMR
Salt Point SP	Stewarts Point SMR Salt Point SMCA Gerstle Cove SMR
Sonoma Coast SB	Russian River SMCA Russian River SMRMA Bodega Head SMR Bodega Head SMCA
<b>Santa Cruz District</b>	
Montara SB	Montara SMR
Año Nuevo SP Big Basin Redwoods SP	Año Nuevo SMCA
Wilder Ranch SP Natural Bridges SB	Natural Bridges SMR
<b>Monterey District</b>	
Asilomar SB	Asilomar SMR
Carmel River SB	Carmel Bay SMCA
Point Lobos SR	Point Lobos SMR
Point Sur SHP Andrew Molera SP	Point Sur SMR
<b>San Luis Obispo Coast District</b>	
Hearst San Simeon SP	Piedras Blancas SMR Cambria SMP
Morro Bay SP Montaña de Oro SP	Morro Bay SMRMA
<b>Orange Coast District</b>	
Crystal Cove SP	Crystal Cove SMCA
<b>San Diego Coast District</b>	
San Elijo SB Cardiff SB	Swami's SMCA
Border Field SP	Tijuana River Mouth SMCA

**Acronyms:**

SB = state beach

SHP = state historic park

SMCA = state marine conservation area

SMR = state marine reserve

SMRMA = state marine recreational management area

SMP = state marine park

SP = state park

SR = state reserve